



District 5 Spring Newsletter

Supervisor Keith Carson

Release Date: May 15, 2009

1221 Oak St., Ste 536
Oakland, CA 94612
Tel. 510-272-6695
Fax 510-271-5151
dist5@acgov.org

Stimulus Funds Will Be Used To Close The Front Door Of Homelessness

On any given night in Alameda County there are 6,215 people who experience homelessness and over the course of a year that figure is as high as 16,000. During this economic recession when people are losing their jobs and homes, it is essential that there is an infrastructure set in place that can quickly and efficiently prevent individuals and families from experiencing homelessness. The trauma of homelessness can have a devastating effect on people, particularly children.

On March 20, 2009 EveryOne Home announced that \$7.5 million in American Recovery and Reinvestment Act (ARRA) funds will be given to Alameda County to address issues related to homelessness. The Homeless Prevention Funds will increase the current allocated funding by 1200%. The bulk of the ARRA funds will help provide rental assistance. Although the funding is not permanent, the allocation will help Alameda County reach its goal of having safe, supportive, and permanent homes for all residents.

A formula was used to determine the amount that each jurisdiction was granted. If the jurisdiction's amount

was \$500,000 or more, the jurisdiction got the funds awarded directly to them. Direct funding went to Alameda, Berkeley, Hayward, Fremont, Oakland, and the County. The County will be responsible for distributing the funding in the unincorporated areas and the smaller cities (Albany, Dublin, Emeryville, Newark, and Piedmont). The state will give priority to competitive grant applications from Livermore, Pleasanton, Union City, and San Leandro whom did not receive direct funding.

Alameda County and 13 other cities have adopted the EveryOne Home Plan (Pleasanton has yet to adopt

the plan). Local government, County Supervisors, City Council members, city mayors, and public and private organizations have come together to take on the task of eradicating homelessness. The collaboration arose from their recognition that stable housing is a critical cornerstone to the health and well-being of the community at large.

The EveryOne Home Plan aims to end homelessness in Alameda County by the year 2020. Two key strategies that have been identified are homeless prevention and rapid re-housing. Providing appropriate services to

individuals and families before they become homeless is critical. Placing on-site services providers at Section 8 or HUD housing can provide immediate local services for families and individuals at risk of becoming homeless. If housing is lost, the plan aims to reduce the length of time someone is without a home. Temporary shelter or housing vouchers will be issued and for those who need additional support, case management or primary care may be provided.



www.everyonehome.org

Staying Housed

In the month of May we celebrated the 25th year anniversary of the East Bay Housing Organization (EBHO) and the annual kick off of Affordable Housing Week. EBHO organizes and advocates for strong land use and housing policies, including campaigns for inclusionary zoning, housing trust funds, supportive housing, tenancy and rental housing protections, transit-oriented development, and municipal commitments to affordable housing development. Affordable Housing week is an effort to educate the community, advocates and elected officials about the importance of affordable housing in our communities.

Today's affordable housing developments serve families, seniors, and people with disabilities. Affordable housing provides a stepping stone for young families, a stable place for many individuals and for vulnerable community members, and a cost-effective living situation for persons with special needs. The housing can be ownership or rental. Affordable housing developments are required to meet the local building standards and design requirements which make it appealing and ecstatically pleasing to the neighborhoods.

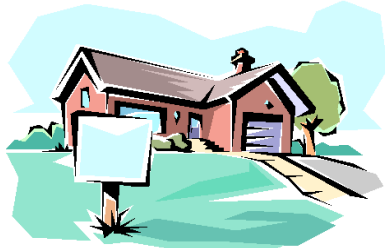
However, with the deepening foreclosure and



Staying Housed... continued from page 1

economic crisis the sustainability of affordable housing is becoming more of an issue impacting low income families. Many families are being impacted by the current economic crisis as more home owners and landlords are experiencing foreclosure.

Landlords are losing their rental properties and the renters are becoming the victims of this vicious cycle.



Given the number of foreclosures, as part of the American Reinvestment and Recovery Act, President Obama formally announced new \$75 billion dollar plan designed to help families prevent foreclosures and stabilize hard-hit communities. The Homeowner Affordability and Stability Plan includes a loan modification program, which provides incentives for lenders to modify

the loans of borrowers who are at risk of foreclosure because their incomes are not sufficient to make their mortgage payments. It also includes refinancing opportunities for borrowers who are current on their mortgage payments but

have been unable to refinance because their homes have decreased in value.

Housing is an essential necessity for all. As a community we need to ensure that our neighbors

are informed about their rights and options for housing during this recession. As we continue to go through these difficult economic times there are a number of organizations that are assisting families with housing issue.

As the we continue to move through this tsunami of an economy the commitment

of our community based partners will continue to be a essential part of the solution, government cannot do it all.

Below are some organizations that might be able to assist with housing issues:

- *Acorn Housing* (510) 436-6532 www.acornhousing.org (Spanish, Vietnamese)
- *Consumer Credit Counseling Services of the East Bay* (800)308-2227 www.ccsebay.org (Spanish)
- *NID Housing Counseling Agency** 5104308068 or 5105620109 www.nidonline.org (English Only)
- *Neighborhood Assistance Corporation of America (NACA)* (510)652-6622 8882975568 www.naca.com

The Alameda County Re-Entry Network

The Alameda County Re-Entry Network is an organization that is committed to assisting formerly incarcerated people effectively transition into our communities. The successful integration of formerly incarcerated people into our neighborhoods is a heavily charged political issue which has serious effects on our economy and our communities. While there is no shortage of diverging opinions about how to work with this population, it is an issue that clearly needs to be addressed.

The Network’s goals include providing a networking environment for people and organizations who work with the formerly incarcerated, identifying best practices, and attempting to influence policy makers to create legislation that is beneficial to those retuning to our communities from jail or prison. The organization played a key coordinating role in Alameda County’s Second Chance Funding grant application. The Alameda County Probation Department is the lead applicant for the grant, partners include the Associated

Community Action Program, the City of Oakland, community members and others. If successful, new funds will come to the region for pre-release planning with those who will return to zip codes with some of the highest crime rates in the County – the work will start shortly after the client is sentenced to Santa Rita Jail. Probation officers and Case Managers will help those who are incarcerated in getting access to healthcare, and essential services upon release.

The Alameda County Re-Entry Network held its second “Decision Makers Meeting” on May 8th. In addition to reporting on the Second Chance Grant Application, Michael Shaw of the County’s Public Health Department informed the crowd that the specifications for the contract recently awarded to the collaborative efforts of Healthy Oakland, Lifelong Medical Care and Dr. Geoffrey Watson were developed as a result of the Network’s Health Care Task Force recommendations. This is a clear example of how the Network

Continued on page 3

Asian Community Collaborative Update

The Asian Community Collaborative (ACC), established in December 2002 consists of over 30 Asian and Asian Pacific Islander (API) community-based organizations that provide services to the Fifth Supervisorial District and throughout Alameda County. The ACC's mission is to provide better access to Alameda County government and works to bring together presenters to discuss pertinent issues related to the current condition of the County. At the quarterly general membership meeting on March 27th, Sam Tuttelman, Director of the Alameda County Social Services Agency's Employment Department and Dorothy Chen, Executive Director of the Alameda County Workforce Investment Board (WIB) informed ACC members about the potential for hundreds of summer youth employment opportunities in the County. The Alameda County WIB received \$2.1 million for its Youth Recovery Act allocation from the State of California as a result of President Obama's American Recovery and Reinvestment Act (ARRA) – Summer Youth Employment Program. This funding will enable the WIB to implement

the Summer Youth Employment Program (SYEP) to hire eligible youth ages 14 to 24 from populations including youth from foster care, CalWorks and General Assistance. In addition, Mr. Tuttelman reported that due to the economic crisis there has been a steady increase of General Assistance cases (approximately 9,000 to date), CalWorks cases (approximately 900 to date), and food stamps applications (approximately 28,000 to date.)

The ACC members also received a presentation from Bernard Ashcraft, Director of the Regional Technical Training Center (RTTC) who spoke about their technical training programs such as continuing education to build skills in numerous career fields including: Biotechnology, Health Care, the Pharmaceutical Industry, Environmental Engineering and other technical training. The RTTC also provides blue collar and green job training and they collaborate with numerous businesses in the Bay Area to assist in preparing their students to enter the workforce.

The other presenter was Amanda Wake, Youth Organizer of the Asian Communities for Reproductive Justice (ACRJ) who discussed their *SAFIRE* program which annually trains 30 to 40 young Asian Pacific Islander women ages 14 to 18 from low-income, immigrant and refugee families as leaders and organizers for reproductive justice. *SAFIRE* is currently leading a community based participatory research project which explores the intersection of climate change and reproductive justice in Oakland. Their research project will launch this summer.

May is Asian Pacific American Heritage Month!

On Tuesday, May 5, representatives from Asian Health Services and the Asian Pacific Environmental Network accepted a Proclamation from the Board of Supervisors on behalf of the Asian communities in Alameda County. Alameda County acknowledges APA Heritage Month every year and urges everyone to celebrate the County's diversity everyday.

The Asian/Asian American and Pacific Islander community has risen to 25.5% of the population in Alameda County. Most of the Asian population is made up of foreign born, new immigrants, and refugees. New emerging groups are Mongolian, Burmese, Nepali and Tibetan.



Photo by Rick Rocamora. Courtesy of AHS.

Re-Entry Network... continued from page 2

is influencing policy and the lives of people.

While many have been active on this issue for a long period of time, the Network is an example of progress in the area of collaboration. Working together is important now more than ever. In March of 2009, the legislature and others in Sacramento began discussing the early release of approximately 39,000 inmates from State Prison with no additional funding to support their programmatic needs. While many in our community

believe there are numerous people behind bars that don't belong there, what preparation and evaluation will be done before inmates are released? The current Sacramento proposal is a cost cutting measure, not one of principal or sound policy. The sluggish economy will mean government at all levels will be forced to make hard choices which don't support the needs of our communities. Those who are returning to our communities that are most in need will not be spared.

May 19, 2009 Election

Got Questions? This chart can help.

Below is a description of the propositions and the names of some of the organizations that are for and against each ballot measure.

PROPOSITION	YES	NO
<p>Proposition 1A: Spending Cap - Limits the amount of money government can spend each year. Creates a special Rainy Day fund and puts new limits on state spending. If voters approve this, a set of newly passed taxes will be extended for two years and further cuts might be avoided. If they vote it down, the extra taxes will end and further cuts will be considered.</p>	<p>AARP American Association of University Women California League of Conservation Voters California State PTA California Tax Payer's Association California Teachers Association</p>	<p>ACORN California Alameda County California Church IMPACT California Federation of Teachers California Nurses Association Courage Campaign California Republican Party California Women's Agenda Health Access California Howard Jarvis Taxpayers Association League of Women Voters SEIU</p>
<p>Proposition 1B: Education Funds - Would provide a one-time payment of \$9.3 billion to schools, spread out over several years beginning in 2011. Requires passage of Prop 1A to be funded.</p>	<p>AARP American Association of University Women California Democratic Party California Federation of Teachers California League of Conservation Voters California State PTA California Teachers Association</p>	<p>California Church IMPACT California Nurses Association California Republican Party Courage Campaign</p>
<p>Proposition 1C: Lottery Borrowing - Allows the state to borrow money for the general fund based on future profits from the state lottery. Borrows \$5 billion from future lottery profits by passing bonds to help balance the 2009-10 state budget. Will protect funding levels for schools. Debt-service payments on the bonds would be about \$400 million annually.</p>	<p>AARP American Association of University Women California Democratic Party California League of Conservation Voters California State PTA California Tax Payer's Association California Teachers Association SEIU</p>	<p>California Church IMPACT California Federation of Teachers California Nurses Association California Republican Party Courage Campaign League of Women Voters</p>
<p>Proposition 1D: Divert Funds from First Five - Redirects Prop 10 funds to the general fund ("First Five" program for early development for children up to age 5) by up to \$340 million in 2009-10. Also reduces funding for Prop 10 state and local commissions by \$268 million annually from 2009-10 through 2013-14.</p>	<p>AARP American Association of University Women California League of Conservation Voters California Tax Payer's Association California Teachers Association</p>	<p>California Church IMPACT California Federation of Teachers California Nurses Association California Republican Party California State PTA Children's Defense Fund California Courage Campaign League of Women Voters Oakland Rising</p>

**Proposition 1E and 1F on next page*

election chart continued...

For More Voter Information visit the California Secretary of State's Website: www.sos.ca.gov

PROPOSITION	YES	NO
Proposition 1E: Divert Funds from Mental Health - Redirects Prop 63 funds to the general fund (the Mental Health Services Act of 2004) by \$230 million annually for the fiscal years 2009-10 and 2010-11.	AARP American Association of University Women California League of Conservation Voters California State PTA California Tax Payer's Association California Teachers Association	California Church IMPACT California Council of Community Mental Health Agencies California Federation of Teachers California Nurses Association California Republican Party Courage Campaign League of Women Voters Oakland Rising
Proposition 1F - Prevents Legislators and statewide constitutional officers, including the Governor, from receiving pay raises during budget deficit years.	AARP American Association of University Women California Democratic Party California League of Conservation Voters California Tax Payer's Association California Teachers Association	California Church IMPACT California Federation of Teachers California Nurses Association California Republican Party Courage Campaign

To find the location of your polling place visit: http://www.acgov.org/rov/may_voter_poll_lookup.htm

Call the **24-Hour Hotline (510) 267-8683** for information about voting by mail, registration and polling place lookup.

Applications are now being accepted from residents in the Fifth Supervisorial District who are interested in serving on a countywide board or commission. The Fifth District encompasses North and West Oakland, Montclair, Rockridge, Trestle Glen, portions of the Fruitvale and San Antonio District, and the cities of Piedmont, Berkeley, Emeryville, and Albany. The following is a list of boards and commissions that have vacancies:

Alameda County Advisory Commission on Aging

1 Vacancy

Provide services to elderly, assist and advise in allocation of funds for the Area Agency on Aging.

Meeting Time: 9:30am, 2nd Monday of each month at 6955 Foothill Blvd, Suite 300, Oakland

Consumer Affairs Commission/1 Vacancy

Promotes and protects the interests of Alameda County Consumers.

Meeting Time: 4:00 p.m., 2nd Thursday of each month at 1221 Oak Street, Oakland

Human Relations Commission/1 Vacancy

Promotes social justice and social equity among Alameda County residents.

Meeting Time: 4:00p.m., 1st Wednesday of each month at 24100 Amador, 3rd Floor, Hayward

Mental Health Board/1 Vacancy

Perform advisory function matters relating to mental health.

Meeting Time: 12:00p.m., 2nd Monday of each month at 1100 San Leandro Blvd., Suite 130, San Leandro

Parks, Recreational, Historical Commission

1 vacancy

Advises the Board of Supervisors on beaches, parks, recreation and historical activities.

Meeting Time: 3:30 p.m., 1st Thursday of each month at 2950 Peralta Oaks Court, Oakland

If you are interested in serving on any board or commission, please send a resume and cover letter to:

*Alameda County Supervisor Keith Carson
 Attention: Mina Sanchez
 1221 Oak Street, Suite 536
 Oakland, CA 94612
 Fax: (510) 271-5151
 Email: mina.sanchez@acgov.org*



Temescal Neighborhood
Saturday, April 18th District 5 staff helped weed and clean the 40th Street median.

EARTH DAY ACTIVITIES 2009



Rebuilding Together Oakland
Saturday, April 25th District 5 staff helped rehabilitate a senior's home.

Meals on Wheels Five Star Night

Alameda County Meals on Wheels is a collaboration of six Meals on Wheels programs in Alameda County that provide warm, home delivered meals to over 2,200 seniors each day. The 22nd annual Five Star Night is the signature event with food prepared by chefs representing the Bay Area's finest restaurants, great wine, and entertainment. All proceeds benefit Alameda County Meals on Wheels.

www.feedingseniors.org



Top Left: Young chefs from around the Bay Area prepared the evening's 5 course meal.

Bottom Left: Guest mingle and bid on numerous silent auction items.

Top Right: Portraits of seniors who receive meals were displayed around the event.

UPCOMING EVENTS



Sunday, June 7, 2009
Telegraph Avenue, Oakland
Between 45th and 51st Street
12:00 p.m. to 6:00 p.m.

Fourth Annual Health and Resource Fair

Thursday, June 11, 2009
North Oakland Senior Center
5714 Martin Luther King Jr. Way,
Oakland
1:00 p.m. to 4:00 p.m.

District 5 posts periodic e-newsletters dedicated to keeping residents informed about local, state, and federal issues.

We hope the District 5 e-newsletter is a useful and engaging source of information about the issues that concern you most.

Subscribe today!

www.acgov.org/board/district5/newsletter